



**JetStreamVS**  
Quick Start Guide  
Maps

# Contents

Introduction to Maps ..... 3

Setting up your Maps ..... 4

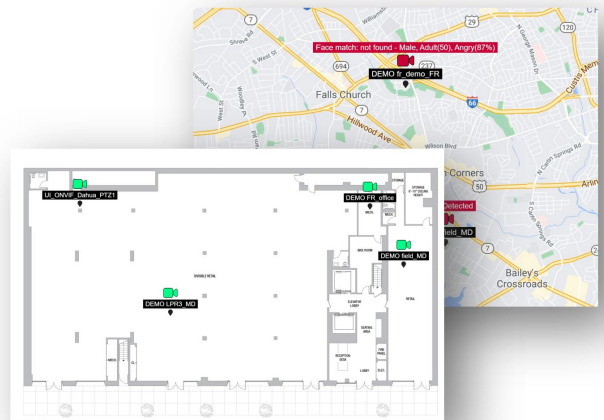
Using your Maps on Dashboard ..... 5

# Introduction to Maps

## Why use Maps?

With Maps View it is easy to visualize where all your cameras are

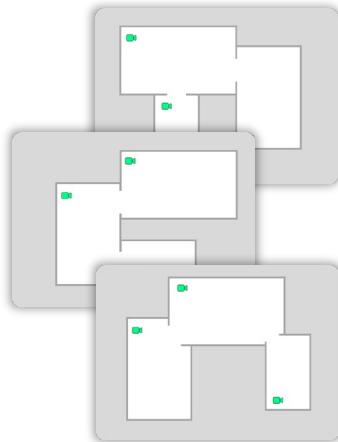
Through the use of layers you have the freedom to customize and order your maps just how you'd like



## Keep track of everything

Using each layer as its own floor makes it easier to handle and organize alerts

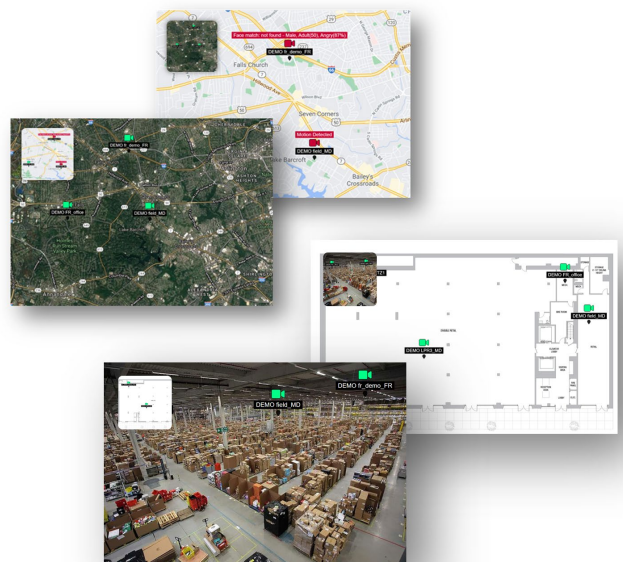
| Layers  |
|---------|
| Floor 1 |
| Floor 2 |
| Floor 3 |



## Alternative Views





Alternative Views allow for an alternative view of the map being looked at

The feature gives flexibility in the different ways that the maps can be related



# Setting up your Maps

## Map Configuration

1. Start by going to the  **Configuration** on the Navigation Panel
2. Open  **Maps**
3. Enter a **Map Set Name** and press 
4. Enter **Map Layer** and press 

**TIP:** Multiple layers can be added to show different perspectives of a map

5. Each map layer has a **Main** and **Alternate** view that can have images upload to

### Main

Used as the primary map picture that can show a broader location map

### Alternate

(Optional) Used for more specific views of a location related to the main map

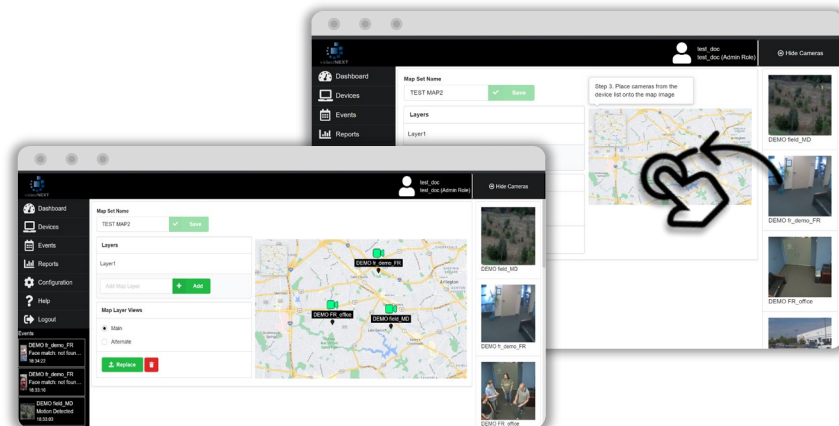
- a) Select Main then press Upload to select your main map picture
- b) Select Alternate then press Upload to select your Alternate map picture

#### Map Layer Views

- ☒ Main  
☐ Alternate



 Upload

6. Drag and drop any camera on the Camera Quick-Access panel to the desired map location. Pinpoints will appear on the map



# Using your Maps on Dashboard

## Map View

1. Start by going to the  **Dashboard** on the Navigation Panel
2. Press  **Maps View**
3. Select the desired **Map Set Name** from the drop-down menu
4. Select the desired **Map Layer**
5. Select whether to see the **Main** or optional **Alternate** Layer View
6. The selected map will appear with all the assigned cameras pinpointed

## Event Detection

### Layer Alert

When an Alert enabled event occurs on a camera that is in a layer a red arrow will appear next to the active Layer



### Camera Alert Indicators

The normal **GREEN** camera icon indicates that there are no active alerts

A **RED** camera icon indicates that there is an active enabled alert that has been triggered

**TIP:** Press on the camera icons to get a preview of the corresponding camera

